

LINKSYS®

USER GUIDE

R
74

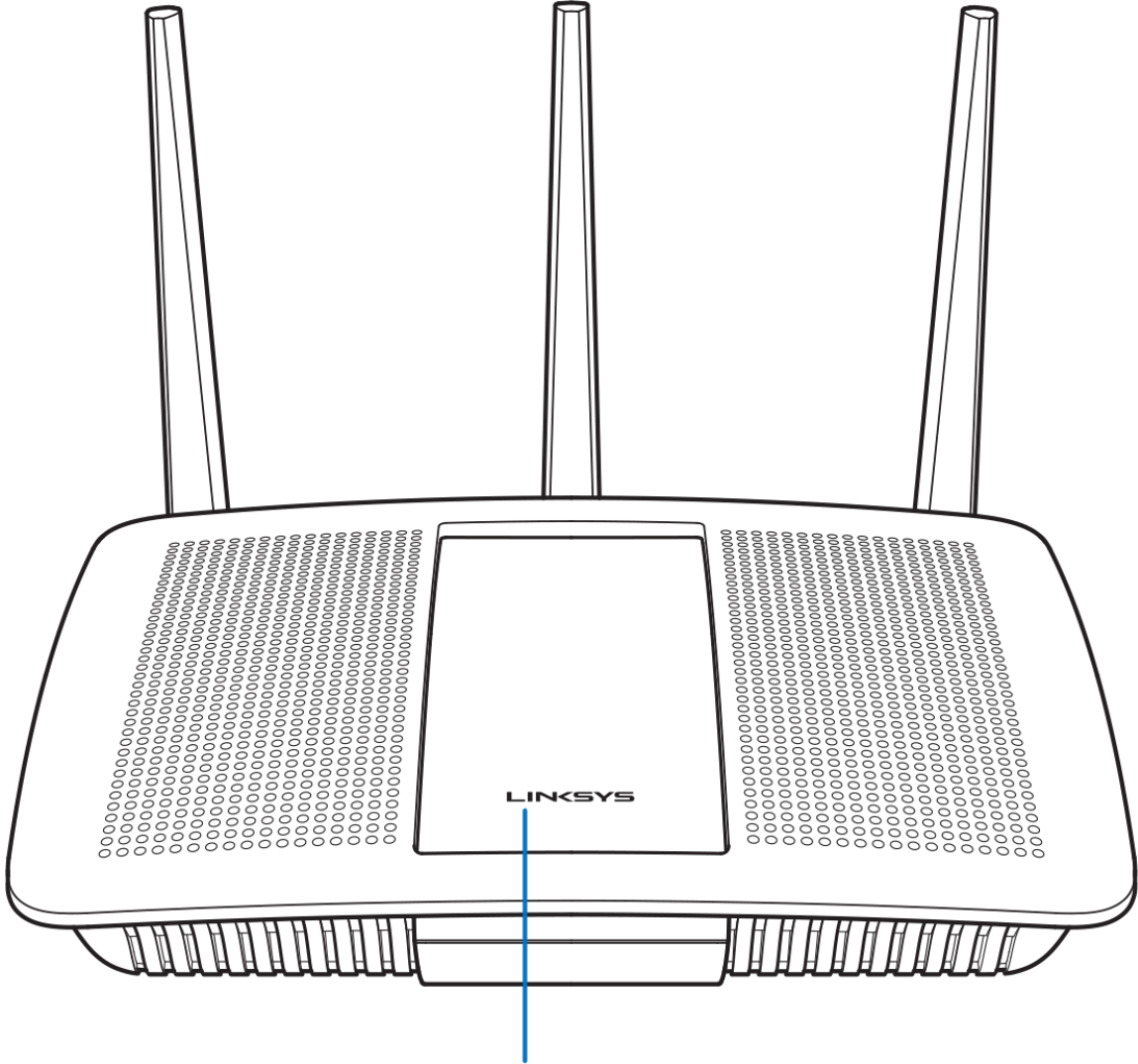
Model EA7450

Contents

Product Overview	3
Top view	3
Back view.....	4
Setting Up: Basics	5
Where to find more help	5
How to install your router	5
How to Use Linksys Smart Wi-Fi	7
How to connect to Linksys Smart Wi-Fi.....	7
Network Map.....	8
Guest Access	8
Parental Controls.....	9
Media Prioritization.....	9
Speed Test.....	10
External Storage	10
Connectivity	11
Troubleshooting.....	11
Wireless.....	12
Security.....	12
Troubleshooting	13
Your router was not successfully set up.....	13
<i>Your Internet cable is not plugged in</i> message.....	14
<i>Cannot access your router</i> message.....	15
After setup.....	16
The internet appears to be unavailable	16
Linksys Smart Wi-Fi does not open in your web browser.....	17
Specifications	18
Linksys EA7450	18
Environmental.....	18

Product Overview

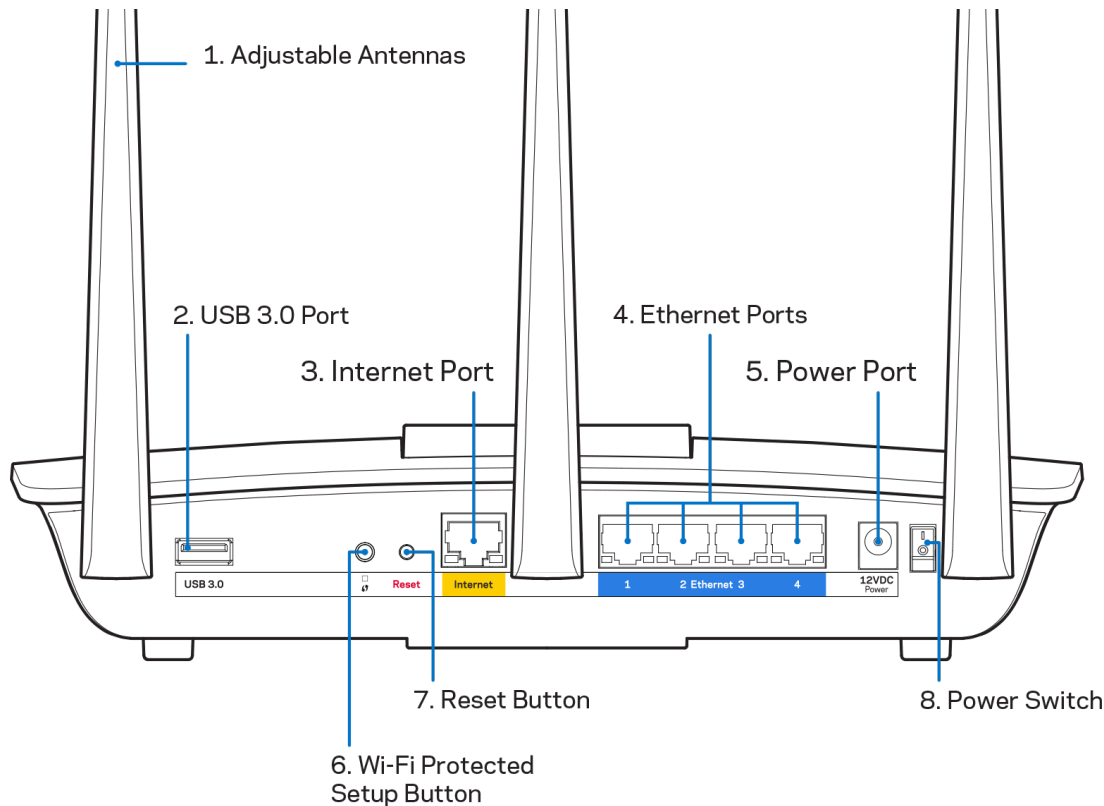
Top view



Illuminated Linksys Logo

Illuminated Linksys logo—The Linksys logo stays on steadily while connected to the internet. It flashes or pulses slowly during startup, self-testing and firmware upgrades. It flashes quickly when indicating connection errors.

Back view



Adjustable antennas (1)—For best performance, position the antennas vertically as shown in the drawing.

USB 3.0 port (2)—Connect and share a USB drive or USB printer on your network or on the internet.

Internet port (3)—Connect an Ethernet cable to this yellow gigabit (10/100/1000) port, and to a broadband internet cable/DSL or fiber modem.

Note—For best performance, use CAT5e or higher rated cables on the Internet ports.

Ethernet ports (4)—Connect Ethernet cables to these blue gigabit (10/100/1000) ports, and to wired devices on your network.

Note—For best performance, use CAT5e or higher rated cables on the Ethernet ports.

Power port (5)—Connect the included AC power adapter.

Wi-Fi Protected Setup™ button (6)—Press to configure wireless security on Wi-Fi Protected Setup-enabled network devices.

Reset button (7)—Press and hold until the illuminated Linksys logo starts flashing to reset the router to factory settings. You can also restore the factory settings using Linksys Smart Wi-Fi on the internet or mobile app.

Power switch (8)—Press | (on) to turn on the router.

Setting Up: Basics

Where to find more help

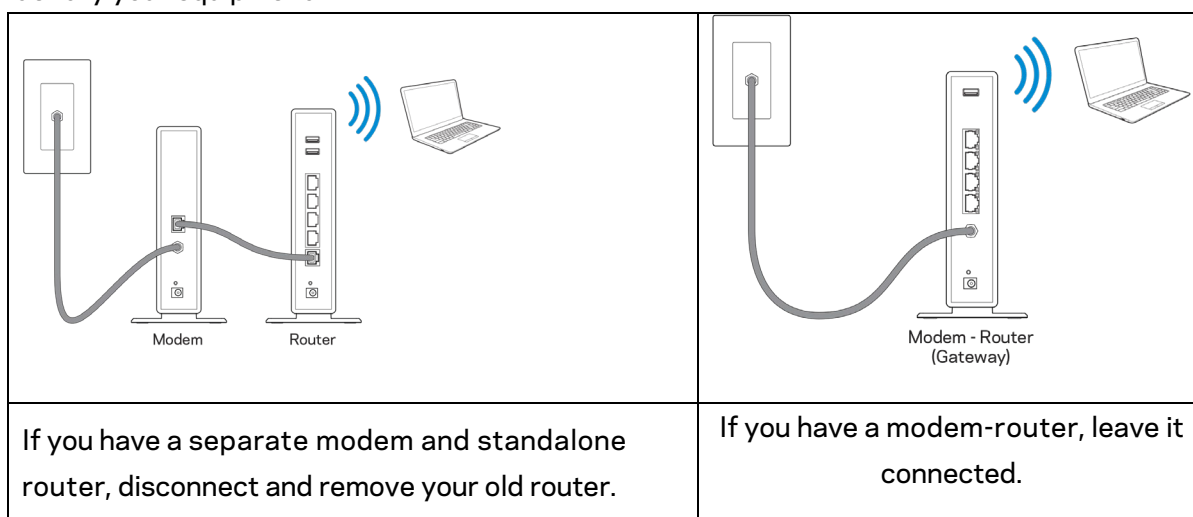
In addition to this user guide, you can find help at these locations:

- Linksys.com/support/EA7450 (documentation, downloads, FAQs, technical support, live chat, forums)

Note—Licenses and notices for third party software used in this product may be viewed on <http://support.linksys.com/en-us/license>. Please contact <http://support.linksys.com/en-us/gplcodecenter> for questions or GPL source code requests.

How to install your router

1. To complete setup, you will need a computer to visit <http://LinksysSmartWiFi.com> in a web browser.
2. Identify your equipment.



3. Position the antennas straight up and plug in the router to a power source. Make sure the power switch in the | (on) position.
4. Connect your router to your modem or modem router. Plug one end of the included internet cable to the yellow Internet port on your new router. If you have a modem, plug the other end into the Ethernet (LAN) port on the modem. If you have a modem-router, plug into any available port.
5. Wait until the illuminated Linksys LED on the top of your router stops blinking and is solid white.
6. Connect to the Wi-Fi name shown in the Quick Start Guide that came with your router. (You can change these details later.) If you need help connecting to the network refer to your device documentation at linksys.com/support/ea7450.

Note—You will not have internet access until router setup is complete.

7. Enter <http://LinksysSmartWiFi.com> in a web browser. Follow the on-screen instructions to complete your router setup. You also can type 192.168.1.1 in a browser to start setup.

At the end of setup, follow the on-screen instructions to set up your Linksys Smart Wi-Fi account. Use Linksys Smart Wi-Fi to configure your router from any computer with an internet connection.

Manage your router's settings:

- Change your router's name and password
- Set up guest access
- Configure parental controls
- Connect devices to your network
- Test your internet connection speed

Note—As part of Linksys Smart Wi-Fi account setup, you will be sent a verification e-mail. From your home network, click the link in the email to associate your router with the Linksys Smart Wi-Fi account.

Tip—Print the next page, then record your router and account settings in the table as a reference. Store your notes in a safe place.

2.4 GHz Wi-Fi Name	
Wi-Fi Password	
5 GHz Wi-Fi Name	
Wi-Fi Password	
Router Password	
Guest Wi-Fi Name	
Guest Wi-Fi Password	
www.LinksysSmartWi-Fi.com Username	
www.LinksysSmartWi-Fi.com Password	

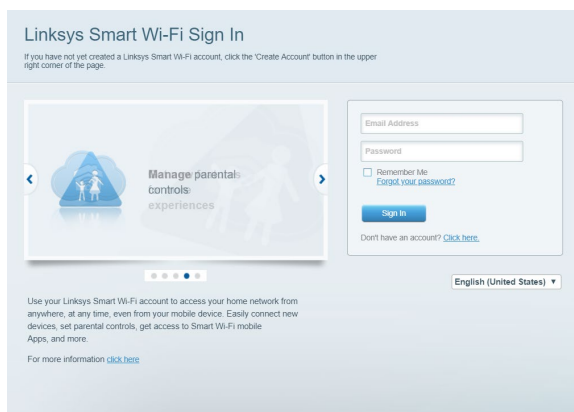
How to Use Linksys Smart Wi-Fi

You can configure your router from anywhere in the world by using Linksys Smart Wi-Fi, but you can also configure your router directly from your home network. Linksys Smart Wi-Fi may be available for your mobile device, as well. See your device's app store for information.

How to connect to Linksys Smart Wi-Fi

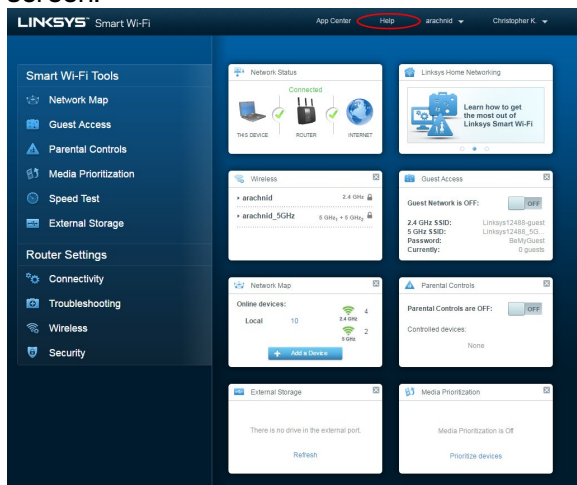
To connect to Linksys Smart Wi-Fi:

1. Open your computer's web browser.
2. Go to www.linksysmartwifi.com and log in to your account.



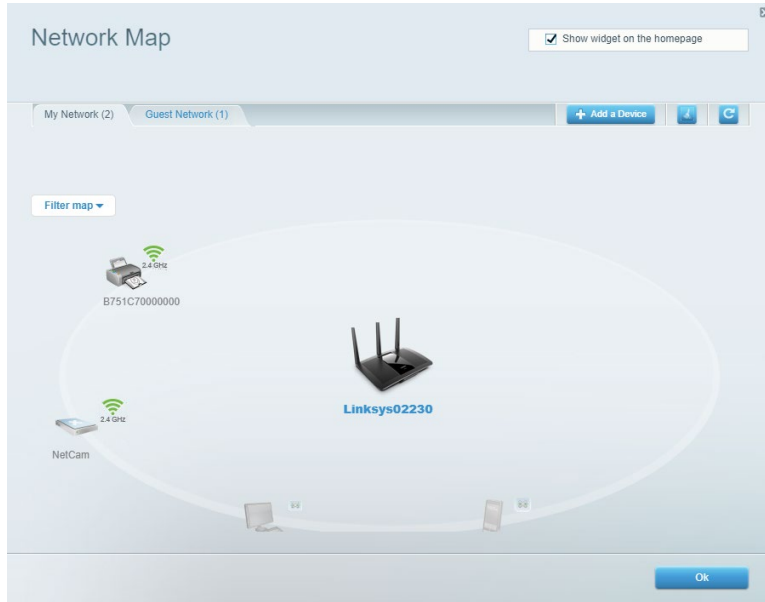
If you can't remember your password, click *Forgot your password?* and follow the on-screen instructions to recover it.

For Linksys Smart Wi-Fi help (connect to Linksys Smart Wi-Fi, then click Help at the top of the main screen.



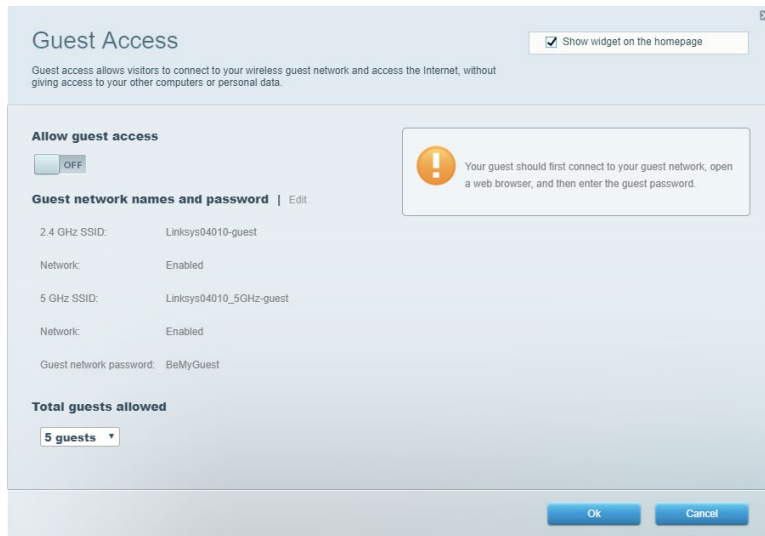
Network Map

Lets you display and manage all network devices connected to your router. You can view devices on your main network and your guest network, or display information about each device.



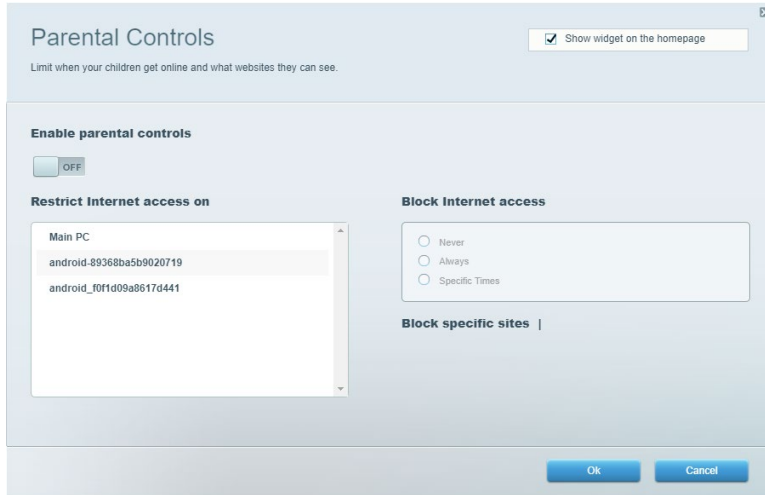
Guest Access

Lets you configure and monitor a network that guests can use without accessing all of your network resources.



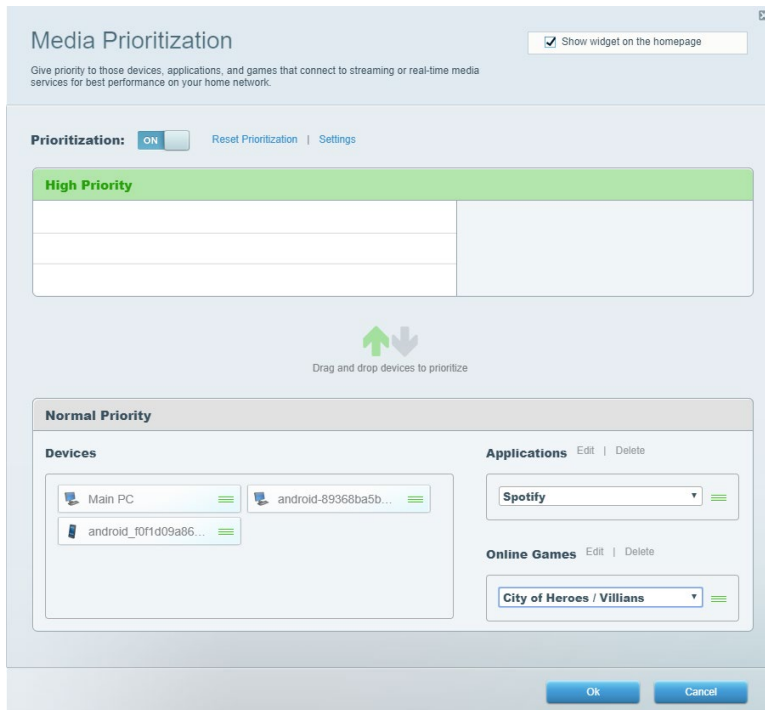
Parental Controls

Lets you block web sites and set internet access times.



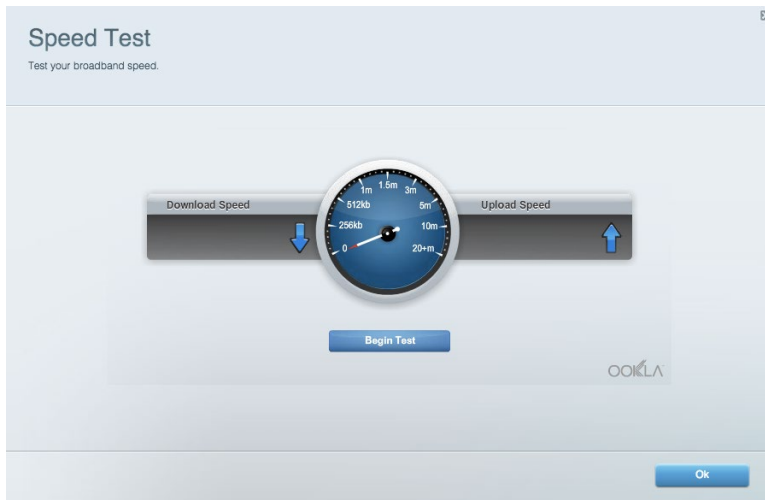
Media Prioritization

Lets you set which devices and applications have top priority for your network traffic.



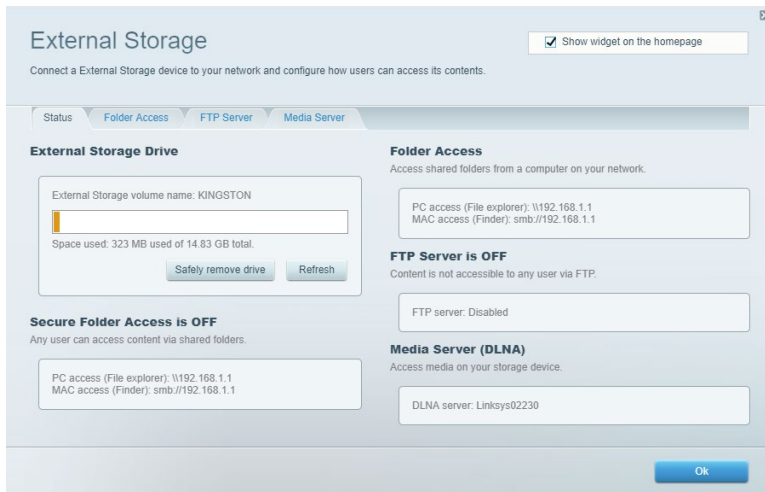
Speed Test

Lets you test your network's internet connection speed.



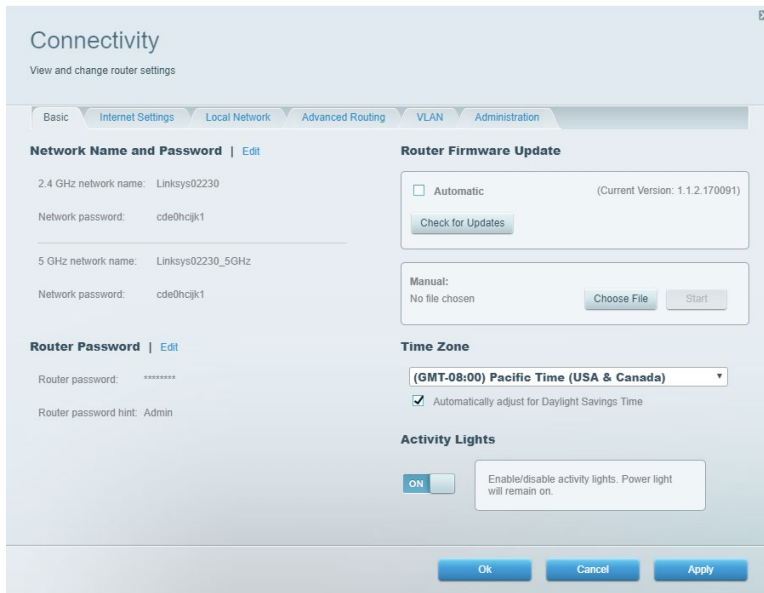
External Storage

Lets you access an attached USB drive (not included) and set up file sharing, a media server, and FTP access.



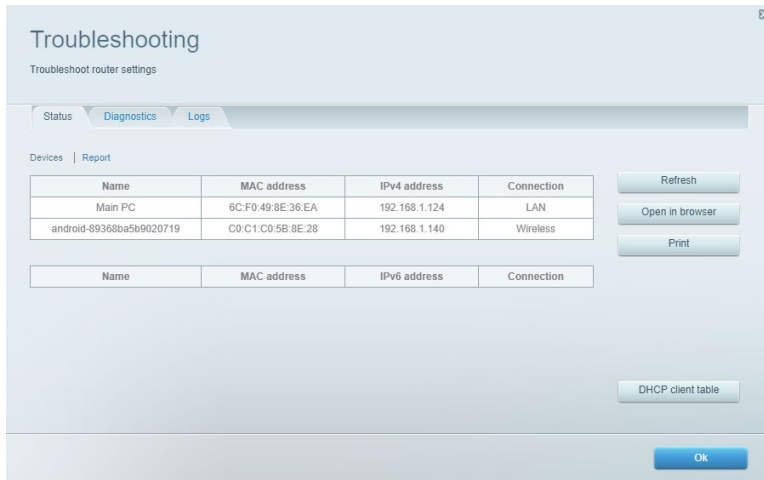
Connectivity

Lets you configure basic and advanced network settings.



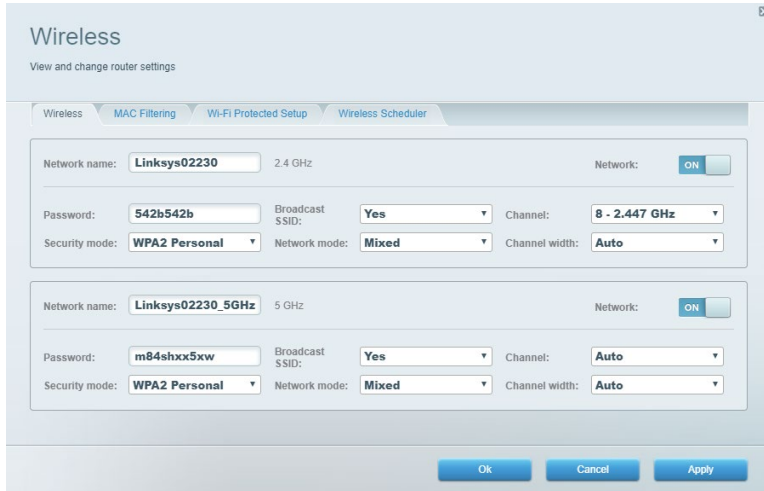
Troubleshooting

Lets you diagnose problems with your router and check the status of the network.



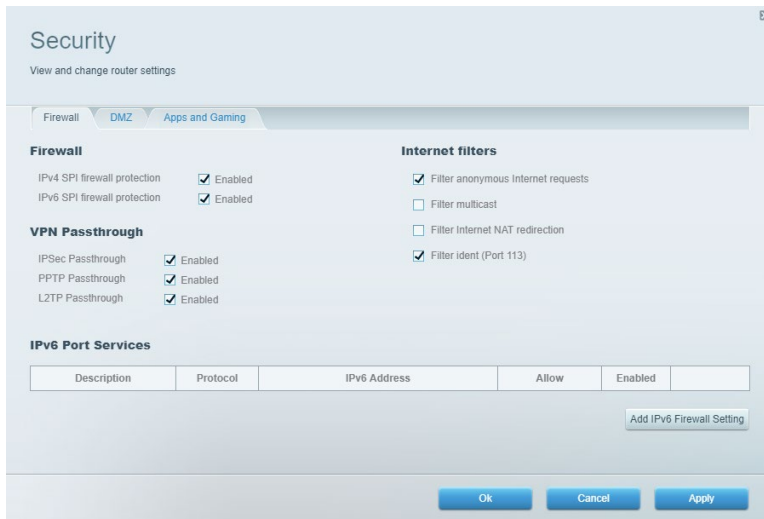
Wireless

Lets you configure your router's wireless network. You can change the security mode, password, MAC filtering, and connect devices using Wi-Fi Protected Setup.



Security

Lets you configure your router's wireless security. You can set up the firewall, VPN settings, and make custom settings for applications and games.



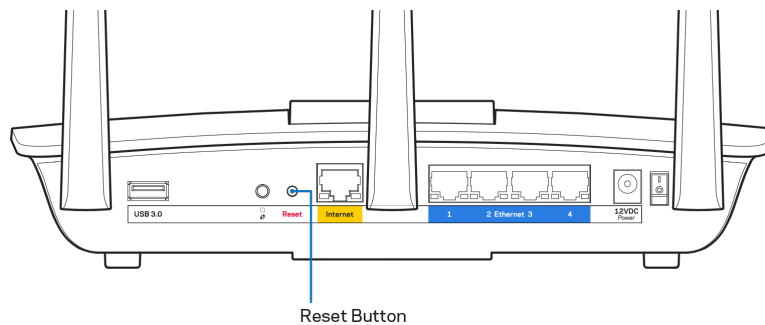
Troubleshooting

You can find more help from our award-winning customer support at Linksys.com/support/EA7450.

Your router was not successfully set up

If Linksys Smart Wi-Fi did not complete the setup, you can try the following:

- Press and hold the Reset button on your router with a paperclip or pin until the LED starts blinking (about 10 seconds). Install the router again.

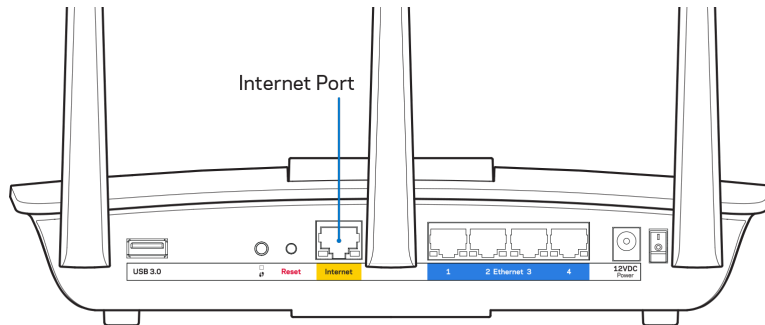


- Temporarily disable your computer's firewall (see the security software's instructions for help). Install the router again.
- If you have another computer, use that computer to install the router again.

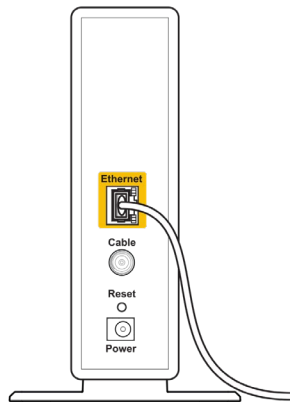
Your Internet cable is not plugged in message

If you get a “Your Internet cable is not plugged in” message when trying to set up your router, follow these troubleshooting steps.

- Make sure that an Ethernet or internet cable (or a cable like the one supplied with your router) is securely connected to the yellow Internet port on the back of the router and to the appropriate port on your modem. This port on the modem is usually labeled Ethernet, but may be named Internet or WAN.

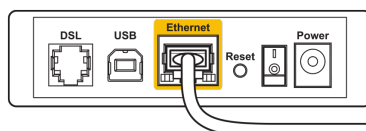


- Make sure that your modem is connected to power and is turned on. If it has a power switch, make sure that it is set to the ON or I (as opposed to O) position.
- If your internet service is cable, verify that the cable modem’s CABLE port is connected to the coaxial cable provided by your ISP.



Back view of cable modem

- If your internet service is DSL, make sure that the DSL phone line is connected to the modem’s DSL port.



Back view of DSL modem

- If your computer was previously connected to your modem with a USB cable, disconnect the USB cable.
- Install the router again.

Cannot access your router message

To access your router, you must be connected to your own network. If you currently have wireless internet access, the problem may be that you have accidentally connected to a different wireless network.

To fix the problem on Windows computers, do the following*:

1. On your Windows desktop, click on the wireless icon in the system tray. A list of available networks will appear.
2. Click your own network name. Click Connect. In the example below, the computer was connected to another wireless network named wraith_5GHz. The wireless network name of the Linksys EA7450 router, Damaged_Beez2.4 in this example, is shown selected.

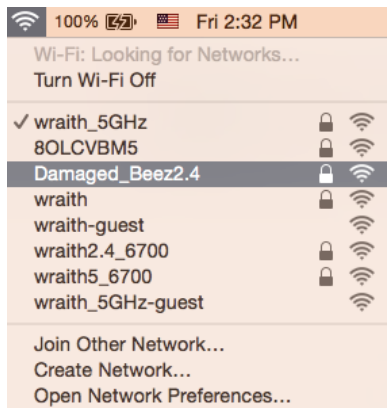


3. If you are prompted to enter a network security key, type your password (security key) into the network security key field. Click **OK**.
4. Your computer will connect to the network, and you should be able to access the router.

**Depending on your version of Windows, there could be some differences in wording or icons in these steps.*

To fix the problem on Mac computers, do the following:

1. In the menu bar across the top of the screen, click the Wi-Fi icon. A list of wireless networks will appear. Linksys Smart Wi-Fi has automatically assigned your network a name.
2. In the example below, the computer was connected to another wireless network named `wraith_5GHz`. The wireless network name of the Linksys EA7450 router, `Damaged_Beez2.4` in this example, is shown selected.



3. Click the wireless network name of your Linksys EA7450 router (`Damaged_Beez2.4` in the example).
4. Type your wireless network password (Security Key) into the *Password* field. Click **OK**.

After setup

The internet appears to be unavailable

If the internet has difficulty communicating with your router, the problem may appear as a “Cannot find [internet address]” message in your Web browser. If you know that the internet address is correct, and if you’ve tried several valid internet addresses with the same result, the message could mean that there’s a problem with your ISP or modem communicating with your router.

Try the following:

- Make sure that the network and power cables are securely connected.
- Make sure that the power outlet that your router is connected to has power.
- Reboot your router.
- Contact your ISP and ask about outages in your area.

The most common method of troubleshooting your router is to turn it off, then back on again. Your router can then reload its custom settings, and other devices (such as the modem) will be able to rediscover the router and communicate with it. This process is called rebooting.

To reboot your router using the power cord, do the following:

1. Disconnect the power cord from the router and the modem.

2. Wait 10 seconds, and reconnect the power cord to the modem. Make sure it has power.
3. Wait until the modem's online indicator has stopped blinking (about two minutes). Reconnect the power cord to the router.
4. Wait until the power indicator stops blinking. Wait two minutes before trying to connect to the internet from a computer.

To reboot your router using Linksys Smart Wi-Fi, do the following:

1. Log in to Linksys Smart Wi-Fi. (See "How to connect to Linksys Smart Wi-Fi" on page [7](#).)
2. Under *Router Settings*, click *Troubleshooting*.
3. Click the *Diagnostics* tab.
4. Under *Reboot*, click Reboot.



5. Click **Yes**. The router will reboot. While the router is rebooting, all connected devices will lose their internet connection, and will automatically reconnect when the router is ready again.

Linksys Smart Wi-Fi does not open in your web browser

The latest versions of Google Chrome™, Firefox®, Safari® (for Mac® and iPad®), Microsoft Edge, and Internet Explorer® version 8 and newer work with Linksys Smart Wi-Fi.

Specifications

Linksys EA7450

Model Name	R74
Model Number	EA7450
Switch Port Speed	10/100/1000 Mbps (Gigabit Ethernet)
Radio Frequency	2.4 GHz and 5 GHz
# of Antennas	3 external adjustable antennas
Ports	Power, USB 3.0, Internet, Ethernet (1-4)
Buttons	Reset, Wi-Fi Protected Setup, Power
LEDs	Top panel: illuminated Linksys logo Back panel: Internet, Ethernet (1-4)
UPnP	Supported
Security Features	WPA2, RADIUS
Security Key Bits	Up to 128-bit encryption
Storage File System Support	FAT, NTFS, and HFS+
Browser Support	Latest versions of Google Chrome™, Firefox®, Safari® (for Mac® and iPad®), Microsoft Edge, and Internet Explorer® version 8 and newer work with Linksys Smart Wi-Fi

Environmental

Dimensions	10.12" x 7.24" x 2.2" (257 x 184 x 56 mm) without antennas
Unit Weight	22.43 oz. (636 g)
Power	12V, 2A
Certifications	FCC, CE, Wi-Fi a/b/g/n, Windows 7, Windows 8
Operating Temperature	32 to 104°F (0 to 40°C)
Storage Temperature	-4 to 140°F (-20 to 60°C)
Operating Humidity	10% to 80% relative humidity, non-condensing
Storage Humidity	5% to 90% non-condensing

Specifications are subject to change without notice.

For regulatory, warranty, and safety information, go to Linksys.com/support/ea7450.

Maximum performance derived from IEEE Standard 802.11 specifications. Actual performance can vary, including lower wireless network capacity, data throughput rate, range and coverage. Performance depends on many factors, conditions and variables, including distance from the access point, volume of network traffic, building materials and construction, operating system used, mix of wireless products used, interference and other adverse conditions.

BELKIN, LINKSYS and many product names and logos are trademarks of the Belkin group of companies. Third-party trademarks mentioned are the property of their respective owners. Licenses and notices for third party software used in this product may be viewed here:

<http://support.linksys.com/en-us/license>. Please contact <http://support.linksys.com/en-us/gplcodecenter> for questions or GPL source code requests.

© 2019 Belkin International, Inc. and/or its affiliates. All rights reserved.

LNKPG-00617 RevA00